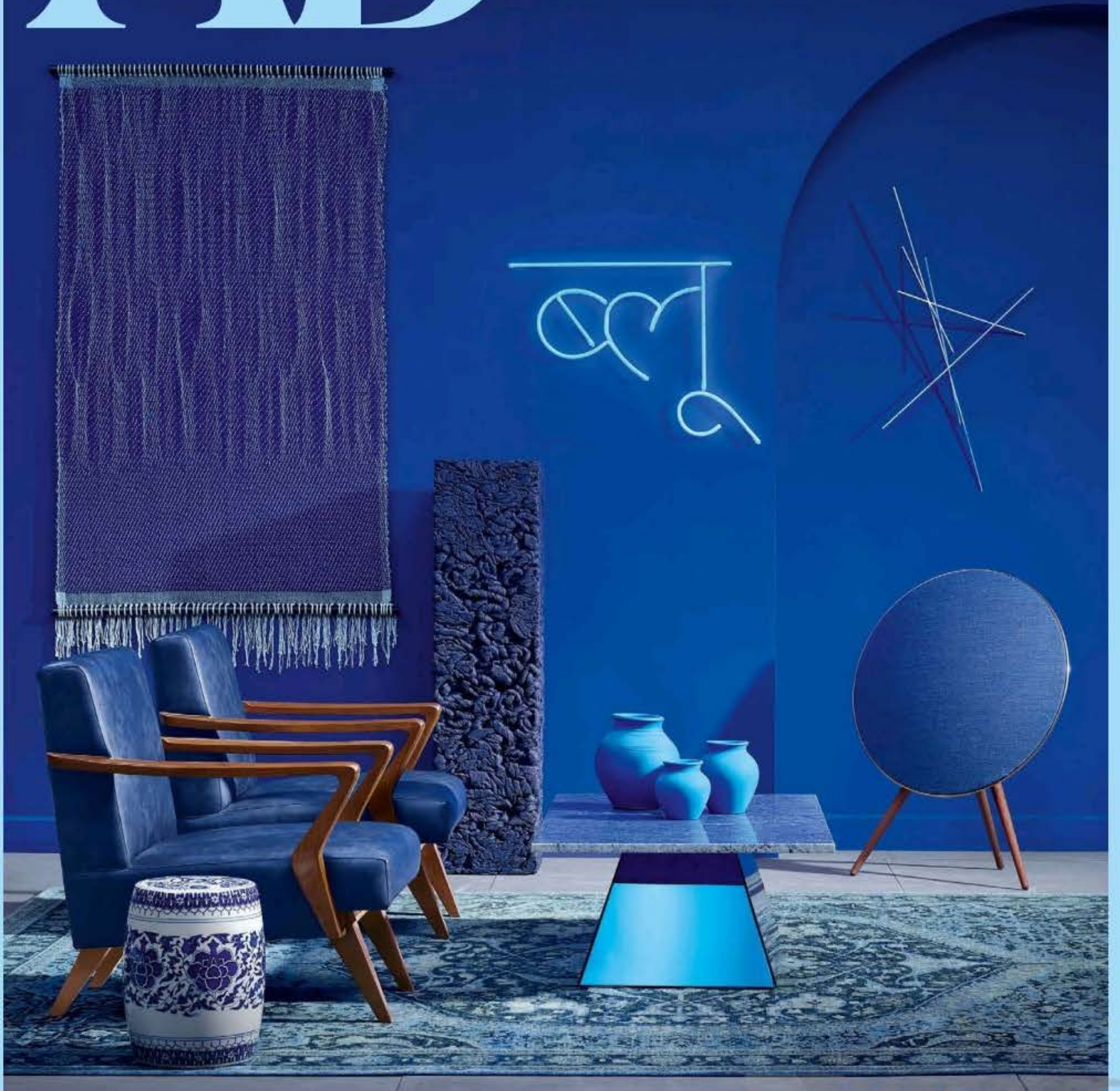


AD

The Blue Issue





ADDRESSING LUXURY

Recently launched in New Delhi, Nitin Kohli Home presents a wholesome experience enveloped in an ultra-modern environment. Previously known as Furncraft Decollage, the reinvented space (*above*) is an amalgamation of international elegance and contemporary sophistication, showcasing furniture that has been crafted by the designer himself. The store presents a series of carefully curated vignettes, revealing Kohli's penchant for fusing art and design to dream up luxury spaces. The indoor space reflects the easy and relaxing vibe of the outdoors as well. The store is located in the Ambawatta One complex, in the serene vicinity of the Qutab Minar, and is already on its way to becoming a design destination in itself.

(nitinkohlibome.wordpress.com)



SEE HOW THEY POP

Adding a defining design element to any space has become easier and more interesting with Topstona's new textural three-dimensional surfaces. The Nero collection (*above*) of contemporary monochromatic wall coverings has been carved on natural stones sourced from Rajasthan. The series derives inspiration from the irregularities of nature.

(topstona.com)



DAILY INSPIRATIONS

Available across the country, Square Foot has introduced the Designer Nature collection (*above*) of integrated flooring solutions inspired by everyday patterns. Their kaleidoscopic designs have been created to bring your floor to life. You can pick from a range of engineered-wood, laminated and solid-wood floors—as well as flooring for outdoor spaces.

(squarefoot.co.in)